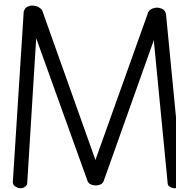
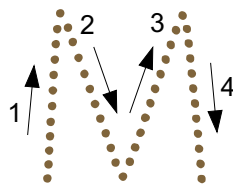


Handwriting practice for the letter E. It consists of three rows. Each row starts with a solid black letter E on the left, followed by seven dotted E's for tracing. The rows are separated by horizontal dashed lines.



Handwriting practice for the letter M. It consists of three rows. Each row starts with a solid black letter M on the left, followed by seven dotted M's for tracing. The rows are separated by horizontal dashed lines.